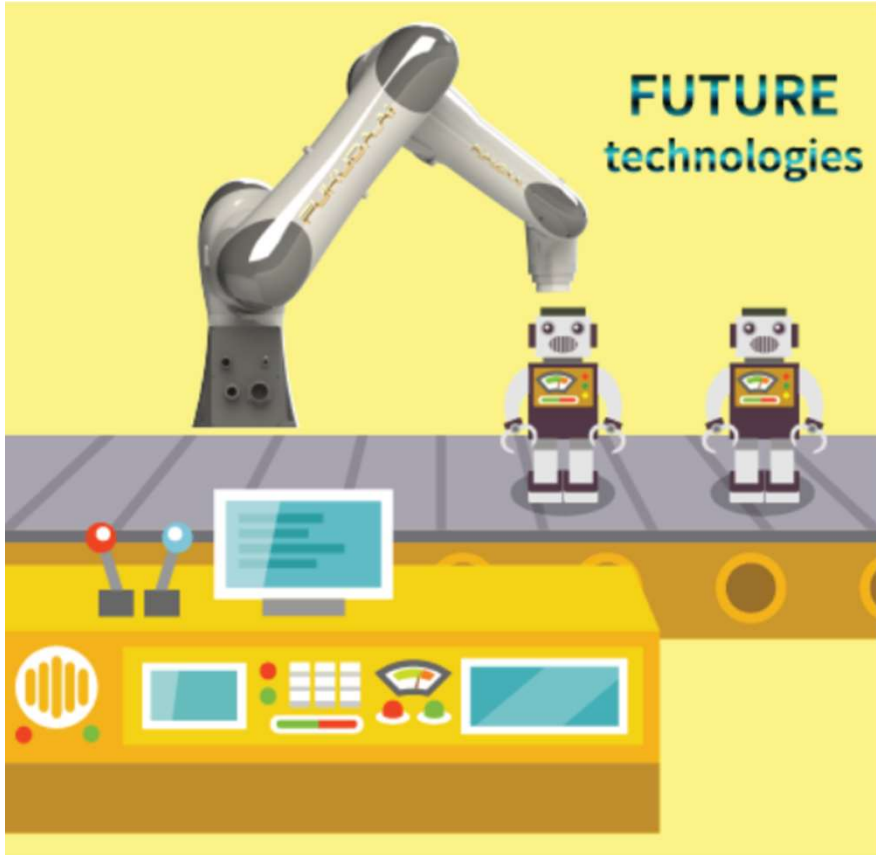




FUKUDA.AI CO.,LTD

〒6792212 Hyogo-ken, Kanzaki-gun, Fukusaki-cho, Fukuda,
Machida, 354-2 Corp Sunrise 11
Web: fukuda.ai



ROBOT SPECIFICATIONS TECHNICAL



FRF10

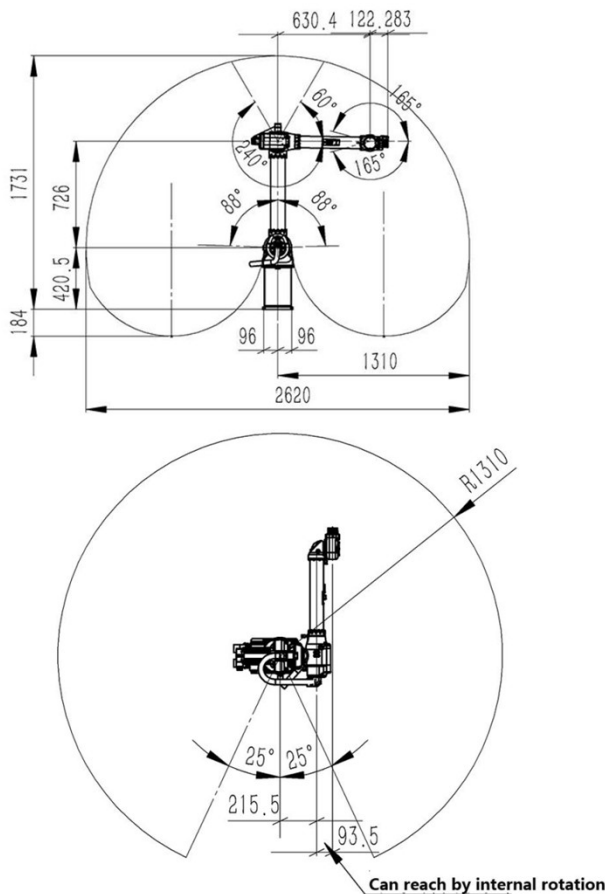


FCF7

Application environment	Temperature	0~45°
	Humidity	20%~80%
	Others	Avoid contact with flammable, explosive or corrosive gases and liquids. Keep away from electronic noise sources (plasma).
Teach pendant cable length		8 m
Machine-Power box connect cable length		3 m
I/O parameters		Pins:32 pins input, 31 pins output
Battery capacity		3 KVA
Rated power/voltage/current		2.4kw/single phase AC 220V/13A
Protection level of robot arm		IP54, the front end of arm IP67
Installation method		Ground Installation, Reverse Installation, Side Installation, Arbitrary Direction Installation
Body weight		61 kg
Control cabinet protection grade		IP53
Control cabinet size		500 (wide)x 270 (thick)x 530 (high) - standing and recumbent
Control cabinet weight		38 kg



FRF10

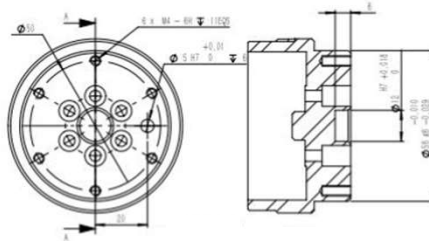
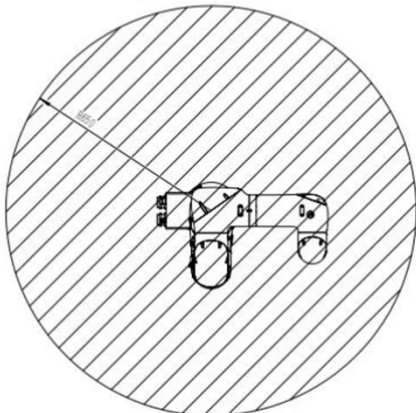
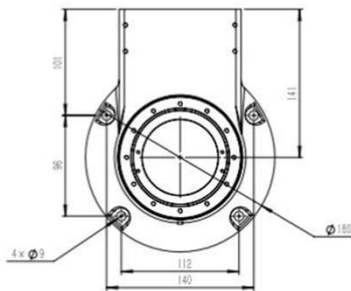
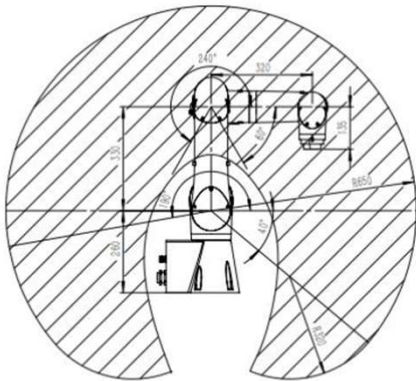


Degree of freedom		6
Payload		10 kg
Max. motion range		1310 mm
Repeatability		±0.05 mm
Range of motion	J1	±155°
	J2	-178°/+2°
	J3	+120°/+420°
	J4	±190°
	J5	±150°
	J6	±360°
Maximum speed	J1	240°/s, 4.19 rad/s
	J2	250°/s, 4.36 rad/s
	J3	300°/s, 5.23 rad/s
	J4	392°/s, 6.84 rad/s
	J5	300°/s, 5.23 rad/s
	J6	600°/s, 10.46 rad/s
Allowable moment of inertia	J6	0.15 kg.m ²
	J5	0.42 kg.m ²
	J4	0.42 kg.m ²
Allowable torque	J6	12.7 N.m
	J5	20.4 N.m
	J4	20.4 N.m



FCF7

Application environment	Temperature	0~50°
	Humidity	20%~80%
	Others	Avoid contact with flammable, explosive or corrosive gas and liquid, and stay away from electronic noise sources (plasma)
Teach pendant cable length		8 m
Machine-Power box connect cable length		3 m
I/O parameters		Pins:32 pins input, 32 pins output
Battery capacity		1.3 KVA
Rated power/voltage/current		1.1kw/single phase AC 220V/5A
Protection level of robot arm		IP67
Installation method		On the earth, upside down pendant, side pendant
Body weight		26 kg



Degree of freedom		6
Payload		7 kg
Max. motion range		885 mm
Repeatability		±0.02 mm
Range of motion	J1	±180°
	J2	-190°/+40°
	J3	-60°/+240°
	J4	±180°
	J5	±180°
	J6	±360°
Maximum speed	J1	200°/s, 3.49 rad/s
	J2	180°/s, 3.14 rad/s
	J3	200°/s, 3.49 rad/s
	J4	300°/s, 5.23 rad/s
	J5	300°/s, 5.23 rad/s
	J6	375°/s, 6.54 rad/s
Allowable moment of inertia	J6	0.12 kg.m ²
	J5	0.23 kg.m ²
	J4	0.31 kg.m ²
Allowable torque	J6	6.8 N.m
	J5	13.3 N.m
	J4	21.56 N.m